
Wear-resistant pipe systems



Contents

Wear-resistant pipe systems

Fused cast basalt ABRESIST pipes

Zirconium corundum ceramics KALCOR pipes

High alumina oxide ceramics KALOCER pipes

Re-linable GREEN pipes

Hard overlay welding KALMETALL pipes

Combination lining

Replaceable pipe bends KALBEND

Flexible hoses systems KALFLEX

Pipe fittings

Pipe connections

Wear protection monitoring KALDETECT

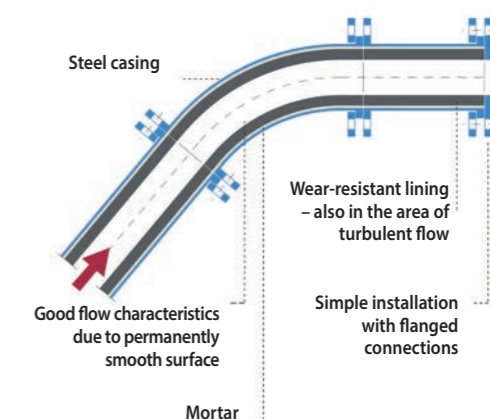
Wear-resistant pipe systems



Pipe bend radius very strongly affects the extent of abrasion

Hydraulic and pneumatic pipe systems often have to withstand extremely harsh conditions. Conveying abrasive materials such as ash, sand or sinter dust subjects pipelines to acute levels of stress. Even thick-walled steel or cast iron pipes often show significant signs of wear in an extremely short period of time.

Example of a wear-protected pipe bend



Particularly affected by wear are the pipe bends, where the flow has strong turbulence. To ensure a long service life and high conveying capacity, it is essential to line the pipes, pipe bends and hoses with wear-resistant materials.

Advantages of wear-resistant pipe systems:

- Long service life
- Maintenance-free operation
- No unscheduled downtime
- No production outages
- Lightweight construction for low transport and installation costs
- Energy-efficient operation thanks to smooth material lining, and excellent throughput characteristics prevent pressure losses and blockages
- No contamination of the conveyed materials due to abrasion, mixture or corrosion
- Many materials physiologically harmless and therefore also suitable for food contact applications
- Kalenborn pipe systems are UV- and acid-resistant, i.e. suitable for demanding chemical applications
- Re-lined GREEN pipes save 90 % CO₂ per kg component





Assembly of the lining with cylinders

Fused cast ABRESIST pipes

ABRESIST fused cast basalt has proven extremely effective as a protective lining in straight pipe elements and in pipe bends. Installed pipe cylinders reduce wear significantly in both pneumatic and hydraulic conveyor lines. After a short time in service, ABRESIST pipes and pipe bends feature an extremely smooth surface, thereby preventing blockage due to moist materials. The corrosion-resistance of ABRESIST ensures that pipes and pipe bends are always ready for use, even after extended downtimes.

As an alternative to complete ABRESIST piping systems, depending on the intended purpose and on the free-flowing bulk goods, it is also possible to protect only specific partial sections subject to particularly high wear stress or to use a combination of wear-resistant materials.



ABRESIST pipes and pipe bends protect against abrasion and corrosion

Properties:

- Lining material: mineral wear protection made of ABRESIST (fused cast basalt)
- Service temperature up to 350 °C
- High abrasive wear resistance
- Durably smooth surface
- No corrosion
- Limited resistance to chemicals and acids
- Excellent price/performance ratio in suitable applications



ABRESIST pipes over 610 mm in diameter

Kalenborn lines pipelines of more than 610 mm in diameter with individual fused cast basalt segments. Material thickness is determined by the severity of the operating conditions. Junctions, branches, round-to-square transitions and other geometrically complex cast or moulded pipe fittings are protected in the same way with surface-optimised linings.

Even large-dimension pipes and complex cast or moulded parts can be durably lined with wear-resistant ABRESIST fused cast basalt.



Zirconium corundum ceramics KALCOR pipes

Wear-proof KALCOR pipe systems are extremely abrasion-resistant, withstand service temperatures up to +400 °C, and also provide good resistance to temperature changes. The cast pipe cylinders are made of zirconium corundum with wall thickness as thin as 12 mm. Kalenborn also manufactures lined pipe bends from cast parts, thereby enabling the production of asymmetrical cross-sections.

Suitable flange connections make it easy to join KALCOR pipes and pipe bends to other existing lines.



KALCOR pulverised coal pipe bends and welded transition pieces



Asymmetric cross-section of a KALCOR pipe made of cast parts

Properties:

- Ceramic wear protection made of cast KALCOR zirconium corundum
- Service temperature up to +400 °C
- Very hard and abrasion-resistant
- Temperature-resistant
- Corrosion-resistant



High alumina oxide ceramics KALOCER pipes

KALOCER pipes and pipe bends are lined with thin pipe cylinders made of special oxide ceramic and designed to withstand extreme wear and/or temperature stresses.

The durably smooth surfaces promote flowability and prevent moist material from forming blockages. Its corrosion resistance ensures that KALOCER pipes and pipe bends are always ready for use, even after extended downtimes. Depending on the stress loading, shape and diameter, Kalenborn produces not only KALOCER pipes and pipe bends with pipe cylinders, but also KALOCER pipes and pipe bends with cast parts (pipe bricks) or individual tiles.

Properties:

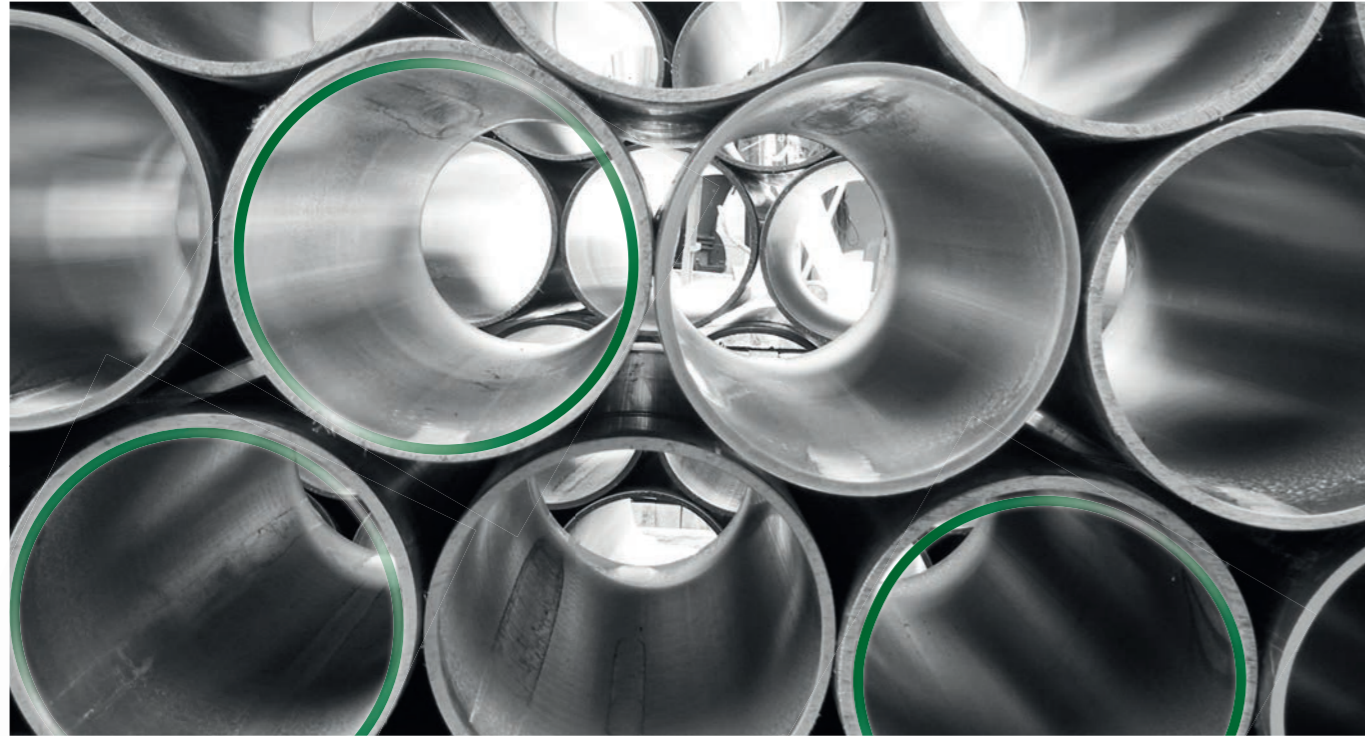
- Wear protection made of special KALOCER oxide ceramic
- Service temperature up to +400 °C
- High wear resistance
- Durably smooth surface
- Corrosion-resistant

Pneumatic KALOCER pipes and pipe bends with thin-wall cylinders used to convey zinc oxides (ZnO) for a leaching unit.



Pneumatic KALOCER transfer line with moulded components for conveying alternative fuel (demolition wood with sand particles) to a furnace, cross-section 203 mm





Re-lined GREEN pipes

Savings of 90% CO₂ per kg of pipe section



Green pipes and pipe bends have a wear-resistant lining that can be removed and recycled at the end of their service life. The wear-resistant lining's special mounting concept makes it possible to remove the old lining without destroying the steel shell.

The existing steel pipes are subsequently relined with new material cylinders. The method used gives the lining the same service life as conventionally lined pipes and pipe bends.

Returning the worn pipes and pipe bends to Kalenborn eliminates disposal costs and no expenses are incurred to manufacture new steel pipes. Companies reduce their CO₂ load on the environment.



THE GREEN PRODUCT RANGE

Green pipes and pipe bends are available as product variants:

- ✓ Fused cast basalt ABRESIST pipes GREEN
- ✓ Zircon corundum ceramic KALCOR pipes GREEN
- ✓ High Alumina ceramics KALOCER pipes GREEN



The wear protection is used in the form of cylinders. Compared with conventional tubes, the process used has no effect on the service life of the wear-resistant pipes and pipe bends.

KALDETECT - Clever wear protection monitoring protects

KALDETECT electric is a good prerequisite for the smooth replacement of the wear protection lining in green pipes. It gives the operator an early indication when the protective lining is worn, thereby keeping the steel pipes from becoming damaged and preventing possible environmental damage.



Hard overlay welding KALMETALL pipes

Pneumatic and hydraulic conveying operations and dust removal subject pipe and channel elements to heavy wear. Making the associated components out of KALMETALL significantly extends their service life. The KALMETALL brand designates a range of hard-faced steel systems comprising a tough basic shell with hard-face welding. The basic material of the systems is the reinforcement substrate. It consists of standard steels, depending on the specific application. The hard-face welding forms the wear layer. It consists of a C-Cr-Fe system with primary chromium carbides. This provides the extreme hardness of the hard-face weld, which can be up to 820 HV, depending on the alloy composition. The standard thickness of the hard-face welding ranges from 3 to 4 mm. Special thicknesses over 4 mm up to 18 mm are also available on request.



Automatic welding machine for lining the interior of a pipe



Pipe component weld joint

Properties:

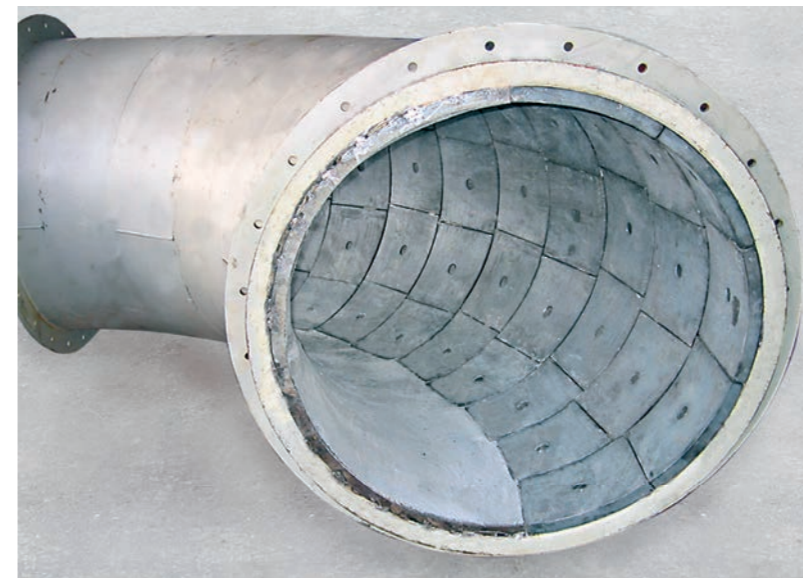
- Metal wear protection using hard-face welding
- Interior and/or exterior hard-face welding
- Uniform seamless and continuous spiral lining
- Extremely resistant to impacts and abrasion (depending on the alloy)
- Highly resistant to temperature changes
- Low weight and easy to join
- Low production cost, enabling rapid replacement of worn pipes
- Highly cost-effective self-supporting structures



Pipe bends lined with KALMETALL in a de-dusting system application, the inner diameter is 400 mm, the system thickness is 8 + 5 mm.



Kalenborn special ducts and bends for a biosolids recycling plant: straight ABRESIST ducts and bends with KALOCER and KALCRET



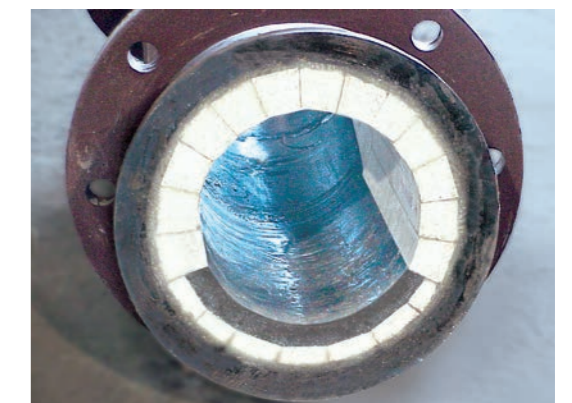
Kalenborn pipe bends for a plastic waste shredder plant: combination of KALCAST hard castings and KALCRET hard compound

Kalenborn pipe bends with the combination of KALMETALL hard-face welding on the exterior of the bend and KALOCER oxide ceramic as pipe brick configuration on the interior

COMBINATION LINING

Optimal wear protection lining for pipes or bends can also consist of a combination of different materials. Kalenborn offers special pipes and bends, the lining of which is specifically designed for various stresses, such as in the example of a biosolids recycling plant. The ducting runs between the dryer, where the biosolids emerge at temperatures of 100° C or higher, and the baghouse, where the material cools and is separated. Rohrbögen mit 25 mm KALOCER Oxidkeramik und im Innenradius kam KALCRET Hartstoff-kompound zum Einsatz.

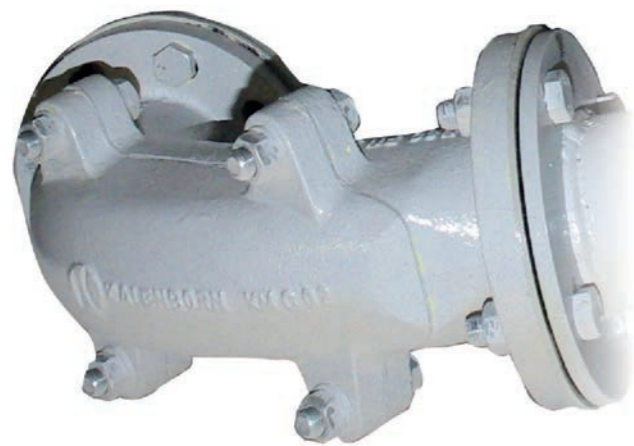
As part of a complete system designed by an OEM, Kalenborn installed about 65 m² of 5-foot (1524 mm) diameter ducting. For optimal wear-resistance, Kalenborn installed ABRESIST fused cast basalt lining on straight runs, 25-mm KALOCER oxide ceramic on elbows, and KALCRET hard compound on the inside radius.



Replaceable pipe bends KALBEND

KALBEND is a wear-resistant and replacement pipe bend. In pneumatic conveyors that carry free-flowing bulk goods, including quartz sand, shotcrete, foundry sand and steelworks dust, most of the abrasive wear occurs in the outer radius of pipe bends. For this reason, Kalenborn developed the KALBEND wear-resistant and replaceable pipe bend. The outside of the bend can be opened with four bolts and removed.

The wear protection lining can be repaired quickly and easily or the worn elbow can be replaced by a new one. Unlike other conveyor pipe bend designs that rely on cushioning where flow changes direction, KALBEND does not impair the free-flowing bulk material. This eliminates the need for downtime for scheduled maintenance. The KALBEND system extends the service life of the pipe bend with minimal, cost-effective effort.



Properties:

- Replaceable, wear-resistant pipe bend
- Extra strength in the wear zone
- Ni-hard for long service life
- 45° and 90° versions available
- Small radius for weight reduction
- Suitable for pressures up to 50 psi.
- 500 - 600 Brinell hardness

Application areas:

- Steel, cement, stone, earthmoving and mining industries
- Ceramics and glass industries
- Chemical and food industries
- Foundry technology



Flexible housing systems KALFLEX

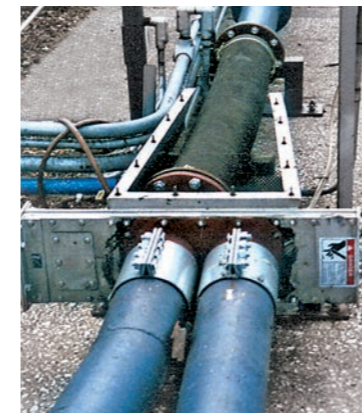


Diamond-shaped arrangement of ceramic tiles for very tight bending radii

KALFLEX is flexible piping that can be easily installed with standard flanges. The core elements of the system are abrasion-resistant tiles or segments made of oxide ceramic or hard casting, which are inserted into one another and pushed flexibly into one another. The segments are enclosed in a rubber jacket containing a fabric insert, which ensures adequate stability and leak tightness.

KALFLEX with segments made of KALOCER ceramic

For applications subject to extremely harsh sliding wear conditions, segments can be made of high alumina ceramics. The inner diameter ranges from 50 to 125 mm. To meet static requirements, the KALOCER solution uses collars and flanges made of hard casting and/or steel.



KALFLEX with segments made of KALCAST hard casting

The wear-resistant KALCAST segments are made of hard castings that provide protection against both impact and sliding wear. Diameters range from 19 to 200 mm.

KALFLEX tubing system as part of a transfer tube in the USA

KALFLEX with diamond-shaped KALOCER ceramic

The outer sleeving of KALFLEX hoses is made of rubber. The embedded woven insert with steel spirals keeps them stable. The inner surface of the hoses has diamond-shaped ceramic plates made of KALOCER embedded into it as part of a vulcanisation process. This provides excellent protection against frictional wear and also makes it possible to arrange the tubing system with tight radii and sharp angles in any direction. The inner diameter ranges from 50 to 200 mm.

Properties:

- Inside diameter ranging from 19 to 200 mm
- Maximum temperature 110 °C
- Pressure up to 10 bar
- Used in diverter valves
- Used as vibration reducing elements
- Used as expansion joints
- Well-suited for use in tight spaces
- Compensation of load cells
- Rubber sleeving: weather-resistant and durable EPDM



KALFLEX conveyor hose for dust recirculation in the steel industry

PIPE FITTINGS

U-bends, tees and cross pieces

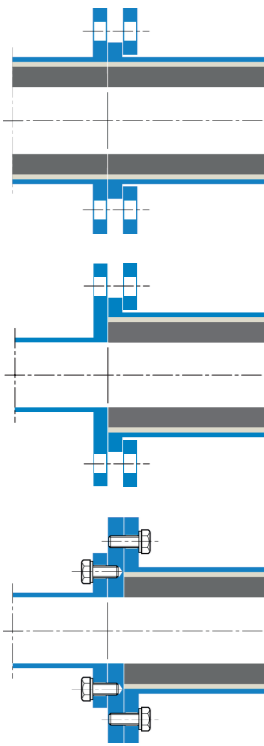
In addition to wear-proof pipes, Kalenborn also produces the associated pipe fittings in an extremely wide range of geometries: From elbows to tees, wyes and cross pieces, all the way to U-bends.



Wear-resistant pipe fittings in an extremely wide range of geometries

PIPE CONNECTIONS

Flanged connections

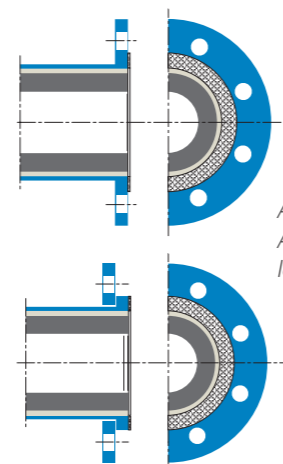


Wear-resistant pipes are joined together and/or with normal steel pipe by means of fixed or loose flanges, depending on requirements. Wear-proofed pipes can be connected to one another easily, provided that at least one side is equipped with a fixed collar and loose flange.

A transition flange with larger diameter bolt circle on the unlined pipe presents an alternative to the intermediate flange. When connecting a lined pipe to a pipe, pump, etc., of differing dimensions, the connection is made using an intermediate flange.

Gaskets

With pipe fittings, the recommended dimensions of gaskets result from:
 Outer diameter = outer diameter of collar
 Inner diameter = outer diameter of steel pipe
 Recommended minimum thickness: 2 mm.
 All conventional gasket materials can be used, depending on the load. Other forms and types of seals are possible.



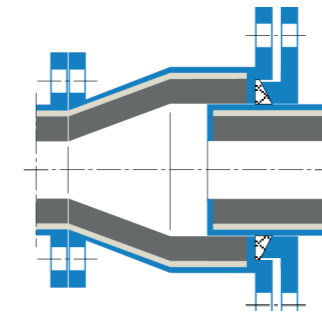
ABRESIST pipe with fixed flange
 ABRESIST pipe with fixed collar and loose flange

Connections with expansion joints

To compensate for the changing length of longer pipelines, various types of wear-proof expansion joints are available.

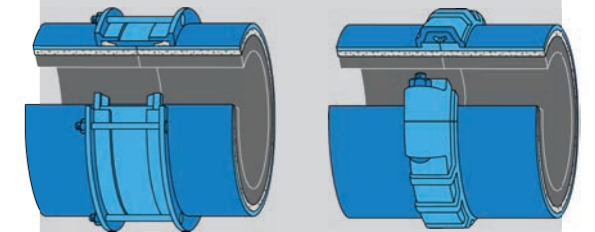


Expansion joint in a hydraulic ash line



Couplings

Wear-proof piping can be joined with all standard coupling elements.



Coupling with radial positive locking and coupling with axial positive locking

Wear protection monitoring KALDETECT

For critical applications, Kalenborn markets systems that indicate the possible wear of protective linings, thereby informing the operator in time to take necessary action. This applies to pneumatic conveyor systems, for example, where measures must be taken to prevent the release of toxic or environmentally harmful substances.



KALDETECT in a German waste incineration plant

KALDETECT electrical

The exterior of the wear protection lining is equipped with a low-voltage measuring conductor. If the wear protection layer inside the piping wears through due to abrasion at any point, the conductor will be interrupted there. This triggers an alarm and – in combination with suitable evaluation logic – indicates the affected section of piping or automatically shuts the plant down. Wear protection monitoring is available for all materials and even for combined linings.

KALDETECT mechanical

Support structure and wear protection lining are fitted with a removable pin installed in a threaded hole. Upon removal, the length of the pin indicates the thickness and condition of the protective lining.

