

KALEA
SPRAYABLE WEAR PROTECTION



WHAT IS KALEA?

Wear protection with minimal downtime

KALEA is a durable, high-performance polyurea-based plastic characterised by high wear resistance and slide promotion. It's used wherever aggressive bulk materials, such as ore, sand, gravel, shale, sinter and the like are transported or stored, and plant components and pipe systems are subject to wear due to abrasion and impact loading. The newly developed material is characterised by excellent wear resistance and features high impact resilience. The weather and temperature-resistant surface protection also possesses sound-absorbing properties. The key benefit offered by KALEA is in increasing operational reliability and extending the service life of plant components.

KALEA is spray-applied and cures extremely quickly. A separate corrosion protection layer is unnecessary. As such, the material is particularly well suited for seamlessly lining plant components with large surface areas, such as coal, ore and sand bunkers as well as lining silos and tanks, chutes and flumes. It can also be used as a wear-resistant lining for pipes and pipe elbows with an internal diameter of 150 mm and above. KALEA is ideally suited for use in combination with other Kalenborn materials.

HIGH PLANT AVAILABILITY

Kalenborn spray technology – the flexible solution



Our polyurea-based plastic lining systems are the ideal way to protect highly stressed surfaces and pipe systems. Suitable substrates for application include steel, aluminium and concrete. It requires just a thin, seamlessly-applied protective layer to significantly increase the maintenance intervals of your plant components, pipes and elbows.

Thanks to the extremely fast processing time of the lining, plant components and pipe systems can be loaded after just a few hours.

> We work closely with you to develop economic, demand-based solutions that reduce your plant downtime due to wear.

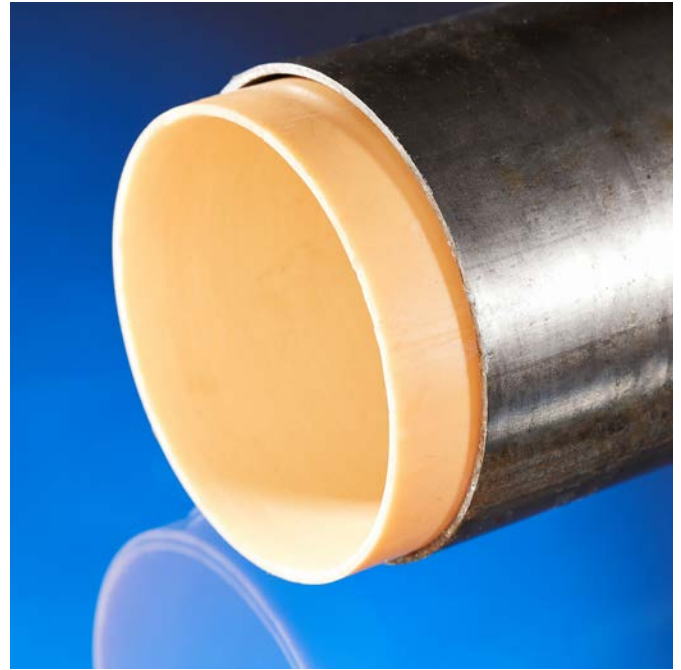
ASK US HOW WE CAN HELP!



ALL-ROUND PROTECTION

Wear-resistant pipes and elbows with KALEA

In our pipe lining facility, we can coat pipes with an internal diameter of 150 mm and above. Pipes are usually protected against wear with a 2-10 mm thick layer of material. We're also able to line pipe elbows, e.g. with a 90° bend, and other physical dimensions.



BENEFITS AT A GLANCE

Tough and elastic: KALEA wear protection

- › **Wear-resistant, smooth surface**
- › **Highly flexible, elastic and tear-resistant**
- › **Rapid, seamless lining of large surfaces**
- › **Loadable after a few hours**
- › **Corrosion resistant**
- › **Chemical and acid resistant**
- › **UV resistant**

PRODUCT FEATURES

Property	Unit	Value
Density	g/cm ³	1.1
Hardness	Shore D	62
Mechanically loadable after	Minutes (at 20°C)	30
Ready for service	Days	3-4
Layer thickness	mm	from 2
Max. application temperature	°C	130

